

Post Top LED Street Light



-Overview:

This post top street light is a high-tech twist on an everyday fixture. Type V optics produce a round distribution which is perfect for parking lots and pathways. Cutting edge LED technology provides maintenance-free operation combined with significant reduction in energy consumption. Add all that to a standard tenon top pole and you've got a simple and effective lighting solution.

- Application

With IES classification Type V, this led area light distributes light in a wide and uniform 360° pattern that is perfect for large outdoor areas such as parking lots, corporate parks, and retail settings.

-Qualifications

ETL Listed:4009701

Suitable for Wet Locations

-IESNA LM79 & LM-80 Testing:

LED luminaires have been tested by an independent laboratory in accordance with IESNALM-79 and LM-80

-DLC Qualification:

Selected models of this product are on the DesignLights Consortium (DLC) Qualified Products List and are eligible for rebates from DLC Member Utilities. To view our DLC qualified products, please consult the DLC Qualified Products List at www.designlights.org/qpl

-Construction

IP Rating:

Ingress Protection rating of IP65 for dust and water

Ambient Temperature:

Suitable for up to 122° F (50° C) ambient temperature

Cold Weather Starting:

The minimum starting temperature is -4° F /-20° C

Housing:

Bronze or Black Aluminum

Mounting Methods:

2" to 3" Pole top mount (refer to the dimensions on page 3)

Green Technology:

Mercury and UV free, and RoHS compliant. Polyester powder coat finish formulated without the use of VOC or toxic heavy metals.

Gaskets:

Silicon Gaskets

Lens:

Frosted or transparent GLASS lens optional.

Light shield ,Bird cone and ladder rest

Light shield ,Bird cone and ladder rest are **NOT** included as a standard structure. Please contact a sale representative to get a quote.

Finish:

Our environmentally friendly polyester powder coating are formulated from high-durability and long-lasting color, and contains no VOC or toxic heavy metals.

-LED Characteristics**LEDs:**

Multi-chip, high-output, long-life LEDs Color

Stability:

LED color temperature is warrantied to shift no more than 200K in CCT over a 5 year period.

Color Temp:

3000 K(Warm white), 4000 K (Natural white), 5000 K(Daylight)

Uniformity:

Range of CCT follows the guidelines of the American National Standards for the Specifications for the Chromaticity of Solid State Lighting (SSL) Products ,ANSI c78.377.2011

Color Rendering Index:

>70

-Electrial

Drivers:

100-277V, 50-60Hz,

Power Factor > 0.9

THD<15%

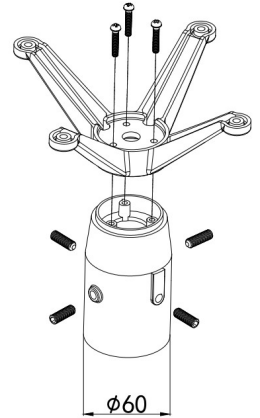
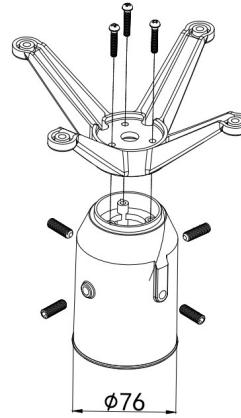
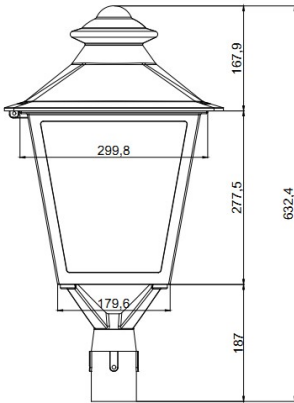
NEMA Receptacle:

3-prong twist lock receptacle included, with short-cap; compatible with 3-pring Photocell Sensors.

-Ordering Matrix

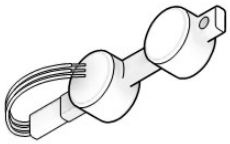
Model	Wattage	Lumens				G.W	Carton size
		3000K	4000K	5000K	5700K		
YR-TP890-W030	30W	2400	2700	3000	3150	21 LBS	16in*16in*27in
YR-TP890-W060	60W	4800	5400	6000	6300	22 LBS	16in*16in*27in
YR-TP890-W120	120W	9600	10000	12000	12600	22 LBS	16in*16in*27in

-Dimensions



-Accessories

Surge Protector (Optional)



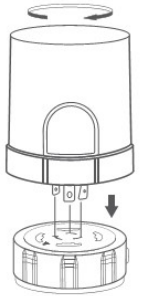
The SPD prevents downtime, improves reliability, and eliminates possible damage to luminaires. This the surge protector option for the luminaire has the maximum discharge current of 10,000A, and nominal discharge current of 3,000 A.

Photocell Sensor (Optional)

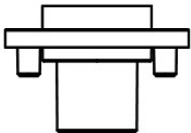
All lights come with NEMA Three-Prong Twist Lock receptacle with short-cap pre-installed. It compatibles with all Three-Prong photocell sensors.



Photocell sensor can be ordered to be easily field installed on the top of the luminaire for Dusk to Dawn functionality.



Microwave Motion Sensor (Optional)



This motion sensor allows extra energy savings without compromising convenience. With its signature 3-step dimming function, it is perfect for use in areas that require a light change notice before optionally switching off the light. Daylight (on/off) sensor is integrated for maximum energy saving.

Hold Time adjustable:
5s / 1min / 5min / 10min / 15min / 20min / 30min / 1h

Stand-by period adjustable:
1min / 30min / 1h / infinity

Daylight (ambient light threshold) adjustable:
10lux / 30lux / 50lux / 100lux / 150lux / 200lux / 300lux / **Disable**

Stand-by dimming level adjustable:
0% / 20% / 30% / 50%