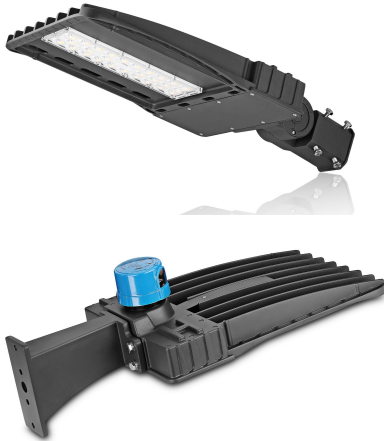
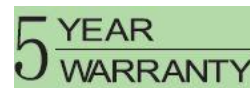


## 100W LED SHOEBOX AREA LIGHT

### Product Features



- High efficiency LED Driver, the wide range input voltage AC120-277V or AC200-480V;
- Lumileds LED high luminous efficiency and long life.
- Cast aluminium design, better cooling and easy replacement, light quality, LED Tj < 85°C.
- Excellent optical design, greatly improve the light utilization and evenness.
- Photocell Control and Motion Sensor Available (Option)



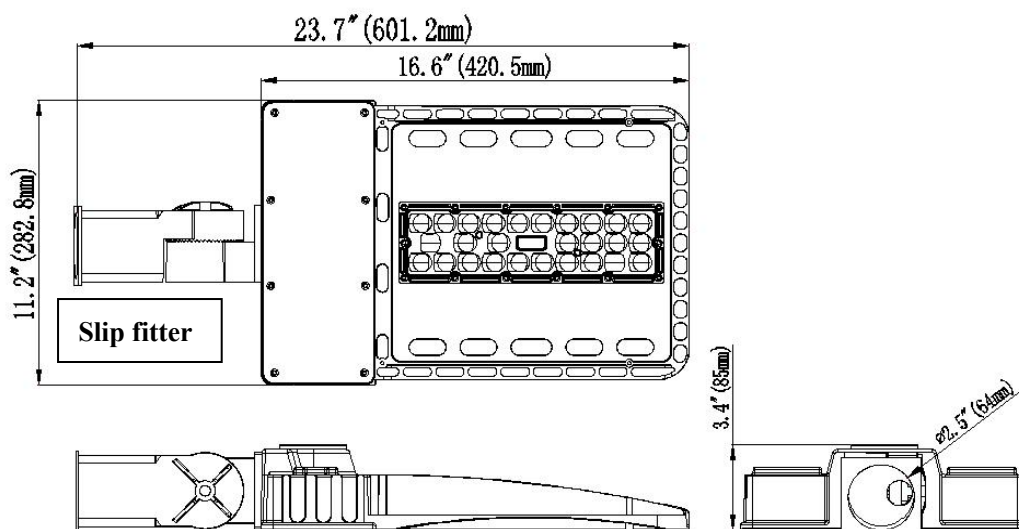
### Product Applications

ECOMAX SHOEBOX AREA LIGHT series can be widely used in Urban roads, Industrial areas, Residential areas, Sidewalks, Parking lot, Schools, Gardens and etc.

### Structure Features

- Shell materials: Aluminum & PC.
- Finish: Dark Bronze/White
- Net weight: 9.92 lbs
- Packing Size: 26 " \* 13.8 " \* 7.3 "

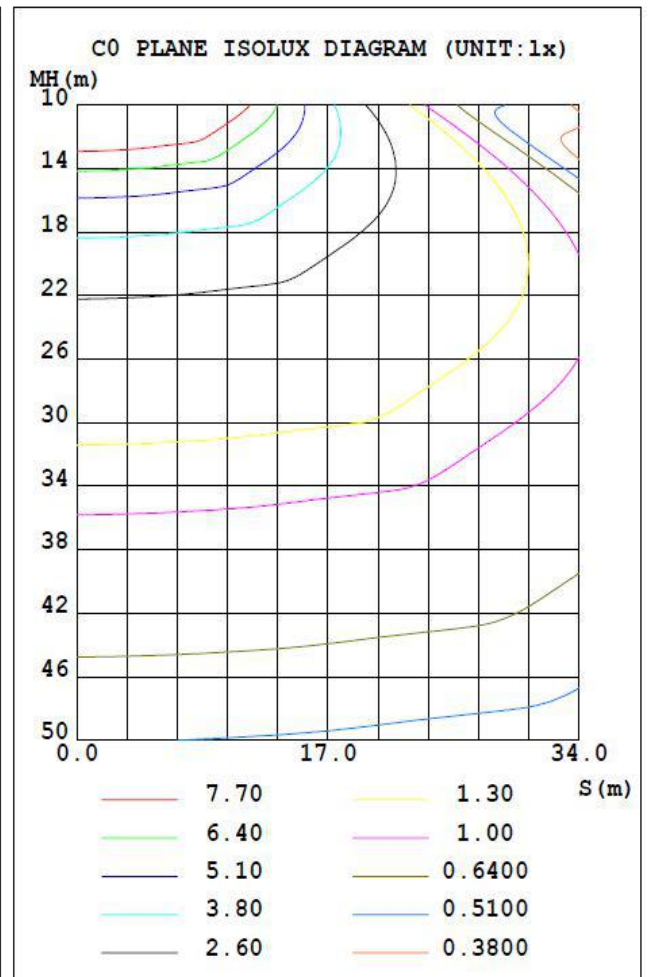
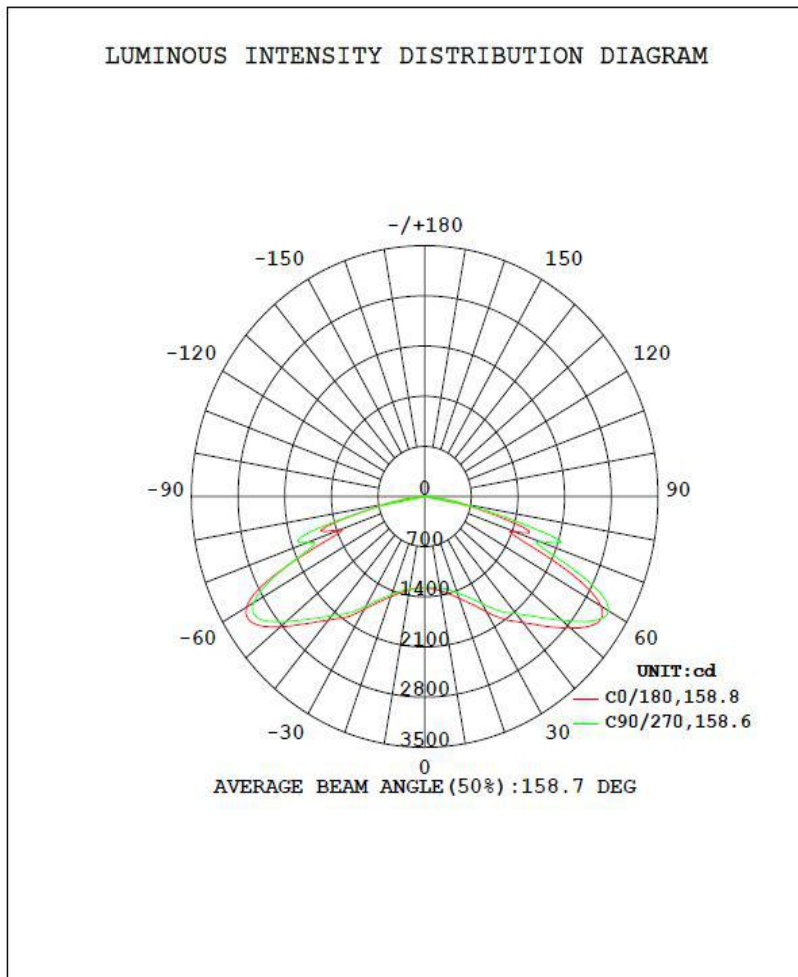
Unit: inch



### ■ Technical Parameters

Type	WSD-SB10W27-XXK-Z-TN-U-Y WSD-SB10W48-XXK-Z-TN-U-Y		
Power	100W	Lighting Angle	Type II, Type III, Type IV, Type V
Input Voltage	AC120-277V AC200-480V	LED Brightness Decay	<5%/6000 hrs
PF	>0.95	Working Life	>50000 hrs
Driver Efficiency	>90%	Working Temperature	-22F - +113F
Luminous Flux	12479Lm	Storage Temperature	-40F - +176F
Color Temperature	4000K/5000K/5700K	Protection Level	Wet Location/IP65
CRI	Ra>80	Cable	3 core, 18AWG

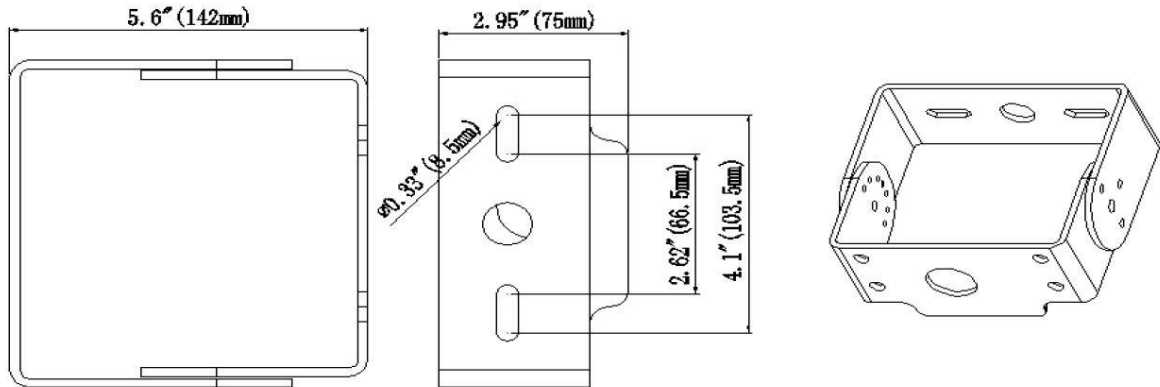
### ■ Photometry and Type V:



#### ■ Accessory Option:

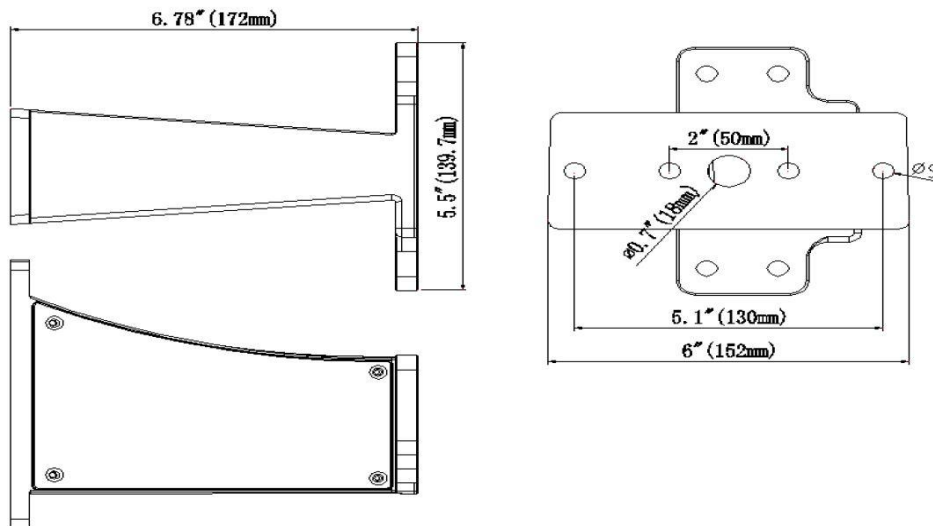
##### II T: TRUNNION MOUNTING

Dimensions of the trunnion

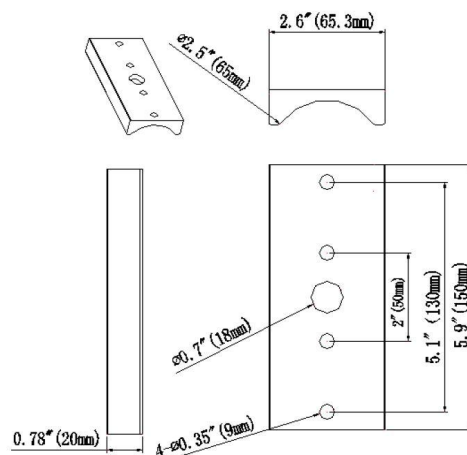


##### III A1: ARM MOUNTING FOR SQUARE POLE

Arm dimensions



#### ■ ARM Adaptor for Round Pole:



#### ● ORDERING INFORMATION:

**EXAMPLE: WSD-SB 10W 27-40K-D-T5-S-P**

WSD	SB	10W	27	40K	D	T5	S	P
Co.Code	Product	Power	Voltage	Color Temp	Finish	IES	Mount	Control
	<b>SB</b> SHOEBOX LIGHT	<b>06W(60W)</b> <b>10W(100W)</b> <b>15W(150W)</b> <b>20W(200W)</b> <b>30W(300W)</b>	<b>27</b> AC120-277V <b>48</b> AC200-480V	<b>40K (4000K)</b> <b>50K (5000K)</b> <b>57K (5700K)</b> <b>± 500K</b>	<b>D</b> Dark Bronze <b>W</b> White <b>B</b> Black	<b>T2</b> TypeII <b>T3</b> TypeIII <b>T4</b> Type IV <b>T5</b> TypeV	<b>S</b> Slip fitter <b>T</b> Trunnion <b>A</b> Arm	<b>P</b> 120-277V Photocell <b>10V</b> Dimming1-10V <b>M</b> Motion Sensor

While “XX” may be any digits represented color temperature;  
 “Z” may be D or W represented color,  
 “N” can be 2, 3 or 5 represented type of lighting distribution;  
 “U” can be S, A or T mounting.  
 “Y” may be “P” or blank represented type of photoelectric Switches  
 “10V” be dimming 1-10V Control  
 “M” be Motion Sensor Control.

#### ■ Product Certifications

